

DEUFA

Fallenherstellung seit 1892



PRODUCT CATALOGUE

TABLE OF CONTENTS

Company portrait	03
Corporate philosophy	04
Mice and rat traps	05
Mice and rats live traps	17
Vole traps	26
Special animal traps	36
Garden supplies	40
Contact	44

MADE IN GERMANY
ENVIRONMENTALLY FRIENDLY
NON-TOXIC
ANIMAL FRIENDLY

PORTRAIT

manufacturing traps since 1892

DEUFA GmbH is a medium-sized company based in Neuburg am Inn in Bavaria, Germany. Now in the hands of the fourth and fifth generations, the family business has been producing rodent traps since 1892. The traps facilitate the species-appropriate, non-toxic and environmentally friendly pest control of mice, rats, voles and martens.

DEUFA GmbH manufactures all the products in its LUNA, LUCHS, FOX, WINA and PlastiCat ranges exclusively in Germany. Under the "Made in Germany" seal, all the company's products are known for their high quality and reliability.

In development, procurement and manufacturing processes, environmental sustainability is a key consideration when selecting raw materials such as certified wood and steel products from the European Union. At the same time, we are also focused on reducing the transport miles in our raw materials procurement and product sales chains.



PHILOSOPHY

Family business – sustainable manufacturing in the countryside

At DEUFA GmbH, the company's origins and traditions play an important part in the way the company is run today. The traditions that have defined the company over the last 125 years have called for courageous decision-making, and these decisions represent the basis for a positive future.

The species-appropriate and non-toxic control of pests through the use of traps is an efficient, intelligent and environmentally friendly form of pest control. No poisons or pollutants are released into the environment. Even when it comes to pests, the environment, nature and all its creatures deserve our respect, and we should always use species-appropriate traps. Our guiding principles when introducing new products and developing existing ones include user friendliness, consideration of the experiences of our customers and compliance with animal welfare regulations.

The "Made in Germany" quality seal is an important element in the company philosophy. We take great pride in manufacturing our products in eastern Lower Bavaria, and we attach great importance to procuring raw materials from the nearest possible sources. This helps to keep transport routes short and cut emissions of all kinds. For example, we source all our steel products from the European Union. All the wood and wood products we use are PEFC™-certified, which guarantees sustainable forestry management. Wood and wood products carrying the PEFC™ seal are verified as coming from environmentally, economically and socially sustainable forestry.



DEUFA GmbH's primary goal is – through openness, transparency and honesty – to establish a trust-based relationship with customers, suppliers and employees as a basis for long-term cooperation.



LUNA Mousetrap Nr. 237 006

The classic solution to mouse problems

- Base made of PEFC™-certified beechwood
- Hammer, catch, hammer spring and holding clamp made of copper-plated steel wire
- Wood seesaw mechanism for triggering the trap
- Defined impact from the hammer and hammer spring combination, guaranteeing the catch through humane killing of the mouse
- Bait bracket for secure placement of the trap
- For indoor and roofed outdoor use

Packaging variants

	Packaging unit	Product no.:	GTIN / EAN
Loose with barcode	1	237 006	4004718 237 006
	20	237 013	4004718 237 013
	500	237 051	4004718 237 051
	100 im Eimer	237 204	4004718 237 204
2 units on card-board hanger	1	800 002	4004718 800 002
	50	800 057	4004718 800 057

Product specifications

Materials: Beechwood, steel wire

Dimensions: 95 x 50 x 15 mm

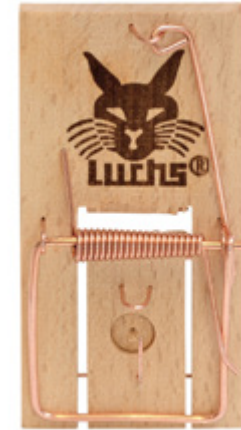
Weight: 30 g



LUCHS Mousetrap Nr. 900 009

The classic solution to mouse problems

- Base made of PEFC™-certified beechwood
- Hammer, catch, hammer spring and holding clamp made of copper-plated steel wire
- Wood seesaw mechanism for triggering the trap
- Defined impact from the hammer and hammer spring combination, guaranteeing the catch through humane killing of the mouse
- Bait hook for safe placement of the trap
- Also suitable for catching shrews
- For indoor and roofed outdoor use



Packaging variants

	Packaging unit	Product no.:	GTIN / EAN
Loose with barcode	1	900 009	4004718 900 009
	20	900 016	4004718 900 016
	500	900 054	4004718 900 054
2 units on cardboard hanger	1	800 002	4004718 800 002
	50	800 057	4004718 800 057

Product specifications

Materials: Beechwood, steel wire

Dimensions: 95 x 50 x 15 mm

Weight: 30 g



LUNA Rat Trap Nr. 240 006

Effective solution to rat problems

- Base made of PEFC™-certified beechwood
- Wood seesaw mechanism for triggering the trap
- Hammer, catch and holding clamp made of copper-plated steel wire
- Spring made of spring steel wire for sustained spring tension even after multiple use
- High impact from the hammer and hammer spring combination, guaranteeing the catch through humane killing of the rat
- Bait bracket for secure placement of the trap
- For indoor and roofed outdoor use



Packaging variants

	Packaging unit	Product no.:	GTIN / EAN
Loose with barcode	1	240 006	4004718 240 006
	10	240 013	4004718 240 013
	100	240 051	4004718 240 051
	20 im Eimer	240 204	4004718 240 204
1 unit on cardboard hanger	1	810 001	4004718 810 001
	30	810 032	4004718 810 032



Product specifications

Materials: Beechwood, steel wire, spring steel wire

Dimensions: 165 x 80 x 30 mm

Weight: 150 g



LUCHS Rat Trap Nr. 910 008

Effective solution to rat problems

- Base made of PEFC™-certified beechwood
- Wood seesaw mechanism for triggering the trap
- Hammer, catch and holding clamp made of copper-plated steel wire
- Spring made of spring steel wire for high and sustained spring tension even after multiple use
- High impact from the hammer and hammer spring combination, guaranteeing the catch through humane killing of the rat
- Bait hook for safe placement of the trap
- For indoor and roofed outdoor use



Packaging variants

	Packaging unit	Product no.:	GTIN / EAN
	1	910 008	4004718 910 008
Loose with barcode	10	910 015	4004718 910 015
	100	910 053	4004718 910 053
1 unit on card-board hanger	1	810 001	4004718 810 001
	30	810 032	4004718 810 032

Product specifications

Materials: Beechwood, steel wire, spring steel wire

Dimensions: 165 x 80 x 30 mm

Weight: 150 g



PEFC
PEFC/04-31-0505



MADE IN
GERMANY



LUCHS Mousetrap with Metal Seesaw

Nr. 920 007

- Base made of PEFC™-certified beechwood
- Hammer, catch, hammer spring and holding clamp made of copper-plated steel wire
- Metal seesaw made of galvanised steel sheet for triggering the trap
- Defined impact from the hammer and hammer spring combination, guaranteeing the catch through humane killing of the mouse
- Metal bait hook for safely placing the bait
- Also suitable for catching shrews
- For indoor and roofed outdoor use

Packaging variants

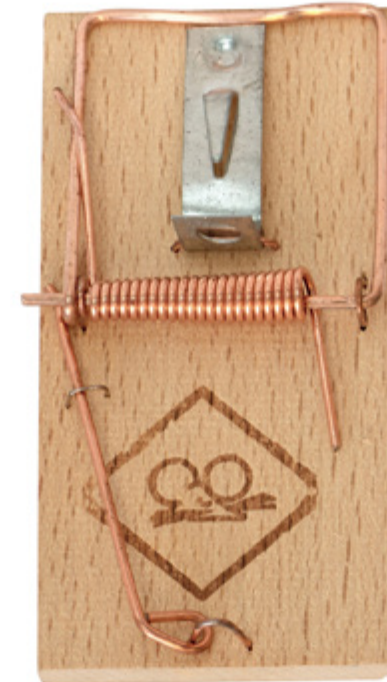
	Packaging unit	Product no.:	GTIN / EAN
Loose with barcode	1	920 007	4004718 920 007
	100	920 038	4004718 920 038

Product specifications

Materials: Beechwood, steel wire, spring steel wire

Dimensions: 95 x 50 x 15 mm

Weight: 30 g



PlastiCat Mousetrap Nr. 820 000

Plastic mousetrap for catching mice quickly, easily and hygienically

- Trap body made of fibreglass-reinforced plastic for high rigidity and durability even when used outdoors
- Environmental sustainability: Trap is made of 100% recycled plastic
- Special seesaw-flap trigger mechanism guarantees the catch through humane killing of the mouse
- Trigger mechanism effectively prevents unnecessary suffering to mice from being caught by the legs or rear, and prevents injuries to pets
- Tensioning spring made of spring steel wire guarantees high and sustained impact even after multiple use
- Bait hole for placing the bait



Packaging variants

	Packaging unit	Product no.:	GTIN / EAN
Loose	1	820 000	4004718 820 000
2 units on card-board hanger	1	820 109	4004718 820 109
	24	820 154	4004718 820 154
	Counter display (14 Stk.)	820 208	4004718 820 208
	Floor display (40 Stk.)	820 307	4004718 820 307



Product specifications

Materials: Fibreglass-reinforced plastic, spring steel wire

Dimensions: 95 x 50 x 45 mm

Weight: 37 g



FOX Mousetrap Nr. 901 006

The outdoor mousetrap – for long-term use!

- Base and seesaw made of galvanised steel sheet, guaranteeing excellent weather resistance thanks to corrosion protection
- Hammer, catch and steel spring made of galvanised/ copper-plated steel wire
- Defined impact from the hammer and hammer spring combination, guaranteeing the catch
- Special geometry in the capture area for humane killing of the mouse
- Bait hook for securing the bait in the trapr
- Also suitable for catching shrews and field mice
- Mainly for outdoor use, but can also be used indoors



Packaging variants

	Packaging unit	Product no.:	GTIN / EAN
	1	901 006	4004718 901 006
Loose	24	901 006	4004718 901 006
	600	901 051	4004718 901 051
2 units in pouch on card-board hanger	1	237 105	4004718 237 105
	30	237 136	4004718 237 136

Product specifications

Materials: Steel sheet, steel wire

Dimensions: 95 x 50 x 15 mm

Weight: 31 g



FOX Rat Trap Nr. 911 005

Powerful metal rat trap for long-term outdoor use

- Base and seesaw made of galvanised steel sheet, guaranteeing excellent weather resistance through corrosion protection
- Hammer and catch made of galvanised steel wire
- Spring made of spring steel wire for high and sustained impact even after multiple use outdoors
- Defined impact from the hammer and hammer spring combination, guaranteeing the catch
- Special geometry in the catching area for humane killing of the rat
- Bait hook for securing the bait in the trap
- Mainly for outdoor use, but can also be used indoors

Packaging variants

	Packaging unit	Product no.:	GTIN / EAN
Loose	1	911 005	4004718 911 005
	20	911 005	4004718 911 005
1 unit in pouch on cardboard hanger	1	240 105	4004718 240 105
	20	240 129	4004718 240 129

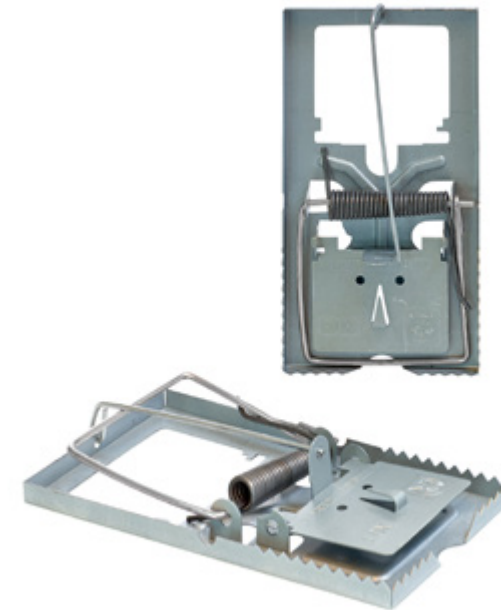
Product specifications

Materials: Steel sheet, steel wire

Dimensions: 170 x 90 x 30 mm

Weight: 142 g


**MADE IN
GERMANY**



WINA Rat Killer Nr. 244 004

Powerful rat killer for growing rodents

- Solid, two-part trap body made of PEFC™-certified beechwood
- Hammer and double-sided spring made of galvanised spring steel wire for high and sustained impact even after multiple use outdoors
- Clamp and bait hook made of galvanised steel wire to guarantee resistance to weathering
- Wire hooks to secure the bait in place
- Lever trigger prevents unnecessary suffering to rodents from being caught by the legs or rear
- Mainly for outdoor use

Packaging variants

	Packaging unit	Product no.:	GTIN / EAN
	1	244 004	4004718 244 004
Loose	20	244 035	4004718 244 035
	72	244 059	4004718 244 059

Product specifications

Materials: Beechwood, steel wire, spring steel wire

Dimensions: 155 x 93 x 175 mm

Weight: 390 g



LUCHS Rat Killer Nr. 940 005

High impact for catching rats

- Large base made of PEFC™-certified beechwood
- Hammer made of galvanised steel strip with enhanced stiffness and strength compared to conventional wire hammers
- Double-sided spring made of galvanised spring steel wire for high and sustained impact even after multiple use outdoors
- Trigger mechanism made of galvanised steel sheet to guarantee sustained weather resistance
- Metal hook to secure the bait in place
- Special positioning of the trigger mechanism and oversized base plate prevents unnecessary suffering to rodents from being caught by the legs or rear
- Mainly for outdoor use



Packaging variants

	Packaging unit	Product no.:	GTIN / EAN
Loose	1	940 005	4004718 940 005
	20	940 036	4004718 940 036

Product specifications

Materials: Beechwood, spring steel wire, galvanised steel strip

Dimensions: 270 x 92 x 35 mm

Weight: 320 g



LUNA Two-Hole Trap Nr. 219 002
LUNA Three-Hole Trap Nr. 220 008

With cord positioning for safe and effective capture of mice

- Field mouse trap in two different designs: two-hole trap or three-hole trap
- Trap body made of PEFC™-certified beechwood
- Hammer made of galvanised steel strip with enhanced stiffness and strength compared to conventional wire hammers
- Spring made of galvanised spring steel wire for high and sustained impact even after multiple use outdoors
- Trap setting with cord for efficiently preventing failed capture in small indoor and outdoor areas or on organic farms

Packaging variants

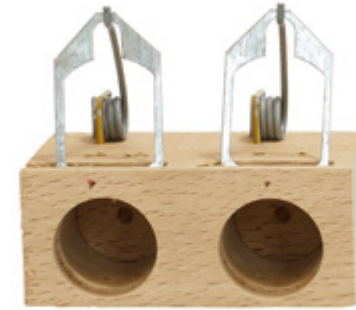
Two-Hole Trap	Packaging unit	Product no.:	GTIN / EAN
Loose	1	219 002	4004718 219 002
	24	219 033	4004718 219 033
Three-Hole Trap	Packaging unit	Product no.:	GTIN / EAN
Loose	1	220 008	4004718 220 008
	24	220 039	4004718 220 039

Product specifications

Materials: Beechwood, spring steel wire, galvanised steel sheet

Two-Hole Trap: 80 x 60 x 70 mm, 82 g

Three-Hole Trap: 120 x 60 x 70 mm, 140 g



LUNA Field Mouse Trap Nr. 210 009

Swiss Ringli trap for catching field mice – Made in Germany!

- Trap for quickly and effectively catching field mice
- Steel wire with large cross-section for high and lasting impact with multiple use
- Copper coating for corrosion protection in long-term outdoor use
- Wire adjusting ring with connecting chain for securing the adjusting ring when releasing the trap

Packaging variants

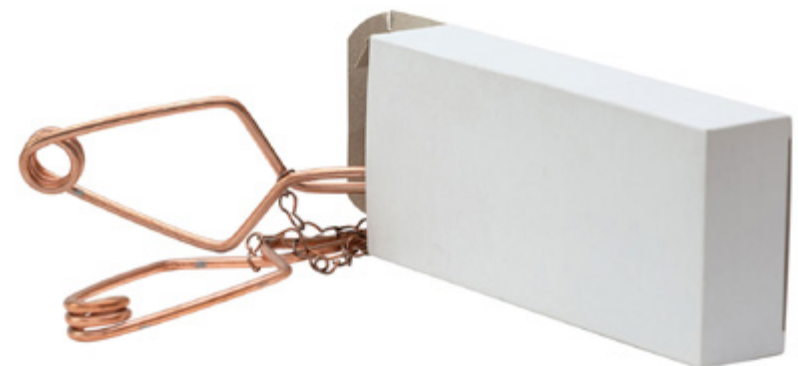
	Packaging unit	Product no.:	GTIN / EAN
Loose	1	210 009	4004718 210 009
	40	210 030	4004718 210 030
2 units in pouch on cardboard hanger	1	210 108	4004718 210 108
	50	210 153	4004718 210 153
Adjusting ring on chain	10	210 207	4004718 210 207

Product specifications

Materials: Copper-plated steel wire

Dimensions: 190 x 62 x 35 mm

Weight: 80 g



LUNA Wire Cage Mousetrap with Wood Base

one-sided Nr. 005 001 / **two-sided** Nr. 006 008

For the safe and humane live capture of mice

- With one-sided and two-sided capture
- Thick OSB base plate of PEFC™-certified manufacture for ensuring excellent stability of the trap body
- OSB board material with waterproof gluing for satisfactory moisture resistance even when used outdoors
- Trap door and back wall (one-sided trap) made of galvanised steel sheet, and trap body made of galvanised wire mesh with corrosion protection for outdoor use
- Optimised door and back-wall geometry for the humane capture of mice
- Spring-steel spiral spring with sustained restoring force even after multiple use
- Minimised risk of injury for children and pets – the trap has no unprotected hammers!

Packaging variants

one-sided	Packaging unit	Product no.:	GTIN / EAN
	1	005 001	4004718 005 001
Loose with barcode label	20	005 025	4004718 005 025
	50	005 056	4004718 005 056
two-sided	Packaging unit	Product no.:	GTIN / EAN
	1	006 008	4004718 006 008
Loose with barcode label	20	006 022	4004718 006 022

Product specifications

Materials: OSB board, spring steel spring, galvanised steel wire, galvanised wire mesh, galvanised steel sheet

one-sided: 150 x 70 x 90 mm, 100 g

two-sided: 280 x 70 x 90 mm, 160 g



LUNA Wire Cage Rat Trap with Wood Base

one-sided Nr. 014 003 / **two-sided** Nr. 013 006

For the safe and humane live capture of rats

- With one-sided or two-sided capture
- Thick OSB base plate of PEFC™-certified manufacture for ensuring excellent stability of the trap body
- OSB board material with waterproof gluing for satisfactory moisture resistance even when used outdoors
- Trap doors made of galvanised steel sheet and trap body made of galvanised wire mesh with corrosion protection for outdoor use
- Optimised door geometry for the humane capture of rats
- Spring-steel spiral spring with sustained restoring force even after multiple use
- Minimised risk of injury for children and pets – the trap has no unprotected hammers!

Packaging variants

one-sided	Packaging unit	Product no.:	GTIN / EAN
Loose with barcode label	1	014 003	4004718 014 003
	12	014 034	4004718 014 034
two-sided	Packaging unit	Product no.:	GTIN / EAN
Loose with barcode label	1	013 006	4004718 013 006
	6	013 037	4004718 013 037

Product specifications

Materials: OSB board, spring steel spring, galvanised steel wire, galvanised wire mesh, galvanised steel sheet

one-sided: 290 x 120 x 120 mm, 380 g

two-sided: 390 x 120 x 120 mm, 670 g



LUNA Wire Cage Mousetrap with Metal Base

one-sided Nr. 105 008 / **two-sided** Nr. 106 005

For the safe and humane live capture of mice

- With one-sided and two-sided capture
- Base plate made of galvanised steel sheet to ensure excellent stability of the trap body and weather resistance for outdoor use
- Metal base plate for preventing the absorption of odours resulting from mouse excretions with multiple use (easy to clean)
- Trap door and back wall (one-sided trap) made of galvanised steel sheet, and trap body made of galvanised wire mesh with corrosion protection for outdoor use
- Optimised door and back-wall geometry for the humane capture of mice
- Spring-steel spiral spring with sustained restoring force even after multiple use
- Minimised risk of injury for children and pets – the trap has no impact mechanism!

Packaging variants

one-sided	Packaging unit	Product no.:	GTIN / EAN
Loose with barcode label	1	105 008	4004718 105 008
	30	105 053	4004718 105 053
two-sided	Packaging unit	Product no.:	GTIN / EAN
Loose with barcode label	1	106 005	4004718 106 005
	15	106 050	4004718 106 050

Product specifications

Materials: Galvanised steel sheet, spring steel spring, galvanised steel wire, galvanised wire mesh

one-sided: 150 x 70 x 90 mm, 120 g

two-sided: 280 x 70 x 90 mm, 180 g




**MADE IN
GERMANY**

LUNA Wire Cage Rat Trap with Metal Base

one-sided Nr. 114 000 / **two-sided** Nr. 113 003

For the safe and humane live capture of rats

- With one-sided and two-sided capture
- Base plate made of galvanised steel sheet to ensure excellent stability of the trap body and weather resistance for outdoor use
- Metal base plate for preventing the absorption of odours resulting from rat excretions with multiple use (easy to clean)
- Trap doors made of galvanised steel sheet and trap body made of galvanised wire mesh with corrosion protection for outdoor use
- Optimised door geometry for the humane capture of rats
- Spring-steel spiral spring with sustained restoring force even after multiple use
- Minimised risk of injury for children and pets – the trap has no impact mechanism!

Packaging variants

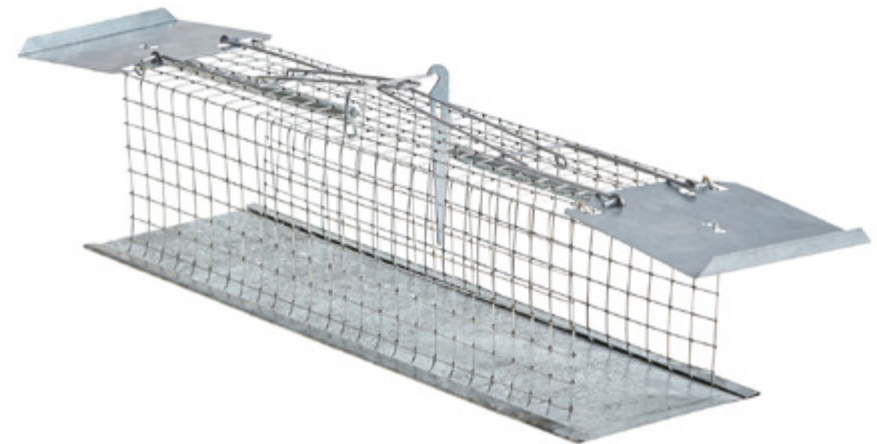
one-sided	Packaging unit	Product no.:	GTIN / EAN
Loose with barcode label	1	114 000	4004718 114 000
	12	114 031	4004718 114 031
two-sided	Packaging unit	Product no.:	GTIN / EAN
Loose with barcode label	1	113 003	4004718 113 003
	6	113 034	4004718 113 034

Product specifications

Materials: Galvanised steel sheet, spring steel spring, galvanised steel wire, galvanised wire mesh

one-sided: 290 x 120 x 120 mm, 300 g

two-sided: 390 x 120 x 120 mm, 600 g



LUNA Cage Mousetrap

1 entrance Nr. 004 004 / 2 entrances Nr. 003 007

Cage trap without mechanical trigger mechanism for the efficient capture of mice

- With one or two entrances
- Robust poplar plywood base plate of PEFC™-certified manufacture for ensuring excellent stability of the trap body
- Poplar plywood with waterproof gluing for satisfactory moisture resistance even when used outdoors
- Hand-welded wire cage made of weather-resistant copper-plated steel wire
- Trap door for inserting the bait is made of galvanised steel sheet
- Optimised inlet geometry for humane catching of mice
- Minimal risk of injury for children and pets – the trap has no movement or impact mechanism!

Packaging variants

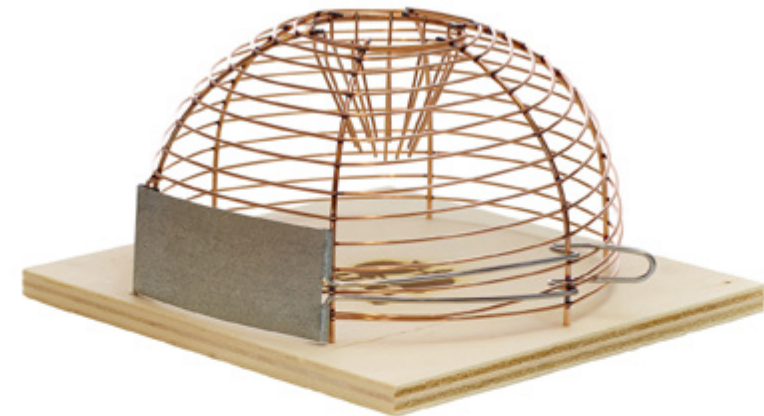
1 entrance	Packaging unit	Product no.:	GTIN / EAN
Loose with barcode label	1	004 004	4004718 004 004
	20	004 028	4004718 004 028
2 entrances	Packaging unit	Product no.:	GTIN / EAN
Loose with barcode label	1	003 007	4004718 003 007
	20	003 021	4004718 003 021
	100	003 106	4004718 003 106

Product specifications

Materials: Poplar plywood, copper-plated steel wire, galvanised steel sheet

1 entrance: 140 x 140 x 80 mm, 100 g

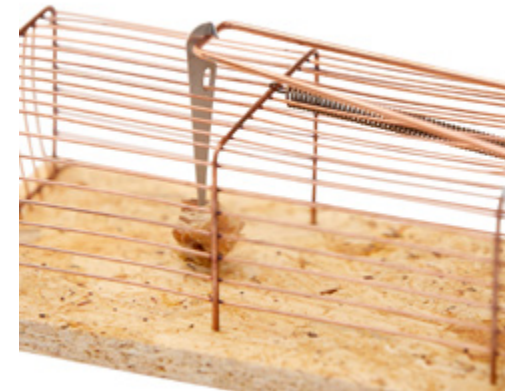
2 entrances: 140 x 140 x 80 mm, 100 g



LUNAWire Cage Mousetrap Deluxe Nr. 007 005

Humane live capture of mice in an extra-large wire cage

- 75% bigger trap body than the standard LUNA Wire Cage Mousetrap (005 001) for more humane live capture of mice
- Hand-welded wire cage made of weather-resistant copper-plated steel wire
- Thick OSB base plate of PEFC™-certified manufacture for ensuring excellent stability of the trap body
- OSB board material with waterproof gluing for satisfactory moisture resistance even when used outdoors
- Optimised door geometry to avoid injuring mice when capturing them
- Trap doors made of galvanised steel sheet with corrosion protection for outdoor use
- Spring-steel spiral spring with sustained restoring force even after multiple use
- Minimised risk of injury for children and pets – the trap has no unprotected hammers!



Packaging variants

	Packaging unit	Product no.:	GTIN / EAN
Loose with barcode label	1	007 005	4004718 007 005
	15	007 036	4004718 007 036

Product specifications

Materials: OSB board, spring steel spring, copper-plated steel wire, galvanised steel sheet

Dimensions: 180 x 90 x 95 mm

Weight: 140 g



LUNA Box Mousetrap Nr. 406 006

Humane live capture in a darkened wood box with no risk of injuries

- 70% bigger trap body than the standard LUNA Wire Cage Mousetrap (005 001) for more humane live capture of mice
- Trap body in OSB material of PEFC™-certified manufacture for ensuring excellent stability of the trap body
- OSB board material with waterproof gluing for satisfactory moisture resistance even when used outdoors
- Trap body in an enclosed design to avoid injuries to the captured mice
- Trap cover made of galvanised wire mesh
- Trap door with metal seesaw trigger mechanism made of galvanised steel sheet with corrosion protection for outdoor use
- Optional: Metal cover for darkening the trap and protecting it from the weather
- Optional: Extended design with oversized trap body
- Minimised risk of injury for children and pets – seesaw trigger mechanism without tension spring!



Packaging variants

	Packaging unit	Product no.:	GTIN / EAN
Loose with bar-code label	1	406 006	4004718 406 006
	24	406 037	4004718 406 037

Product specifications

Materials: OSB board, galvanised steel sheet, galvanised wire mesh

Dimensions: 200 x 60 x 80 mm

Weight: 300 g



LUNA Cage Rat Trap Deluxe Nr. 554 004

Weather-resistant metal live-capture trap for rats and larger rodents

- Base plate made of galvanised steel sheet to ensure excellent stability of the trap body and weather resistance for outdoor use (easy to clean)
- Metal base plate for preventing the absorption of odours resulting from rodent excretions with multiple use
- Trap body and closable back wall made of robust, galvanised wire mesh with corrosion protection for outdoor use
- Bait hook, locking mechanism and carry handle made of galvanised steel wire
- Optimised metal rocker trigger mechanism for humane live capture of rats and larger rodents such as dormice or weasels
- Minimised risk of injury – seesaw trigger mechanism without tension spring!



Packaging variants

	Packaging unit	Product no.:	GTIN / EAN
Loose with barcode label	1	554 004	4004718 554 004
	6	554 035	4004718 554 035

Product specifications

Materials: Galvanised steel sheet, galvanised steel wire, galvanised wire mesh

Dimensions: 400 x 120 x 130 mm

Weight: 900 g



LUNA Multi-Catch Rat Trap Nr. 553 007

Weather-resistant multi-catch trap for rats

- Large trap body for catching numerous rats and larger rodents
- Lockable opening for inserting the bait and for releasing the animals easily
- Trap body and closable back wall made of robust, galvanised wire mesh with corrosion protection for outdoor use
- Bait hook, locking mechanism and carry handle made of galvanised steel wire
- Flap door mechanism for humane live capture without risk of injury to other animals, pets or children
- Minimal risk of injury – no tension spring on flap door!



Packaging variants

	Packaging unit	Product no.:	GTIN / EAN
einseitig	1	553 007	4004718 553 007

Product specifications

Materials: Galvanised steel wire,
galvanised wire mesh

Dimensions: 400 x 460 x 170 mm

Weight: 1800 g


**MADE IN
GERMANY**

LUNA Baden Vole Trap Nr. 233 008

Baden-style wire trap for capturing voles

- Wire trap with bait plate for quickly and effectively catching voles
- Steel wire with large cross-section for high and lasting impact with multiple use
- Copper coating provides corrosion protection for long-term outdoor use
- Bait plate made of galvanised steel sheet with bait hole

Packaging variants

	Packaging unit	Product no.:	GTIN / EAN
	1	233 008	4004718 233 008
Loose with bait plate	50	233 039	4004718 233 039
	100	233 053	4004718 233 053
2 units in pouch on cardboard hanger with bait plate	1	233 206	4004718 233 206
	50	233 251	4004718 233 251
Bait plate (replacement part)	50	233 091	4004718 233 091

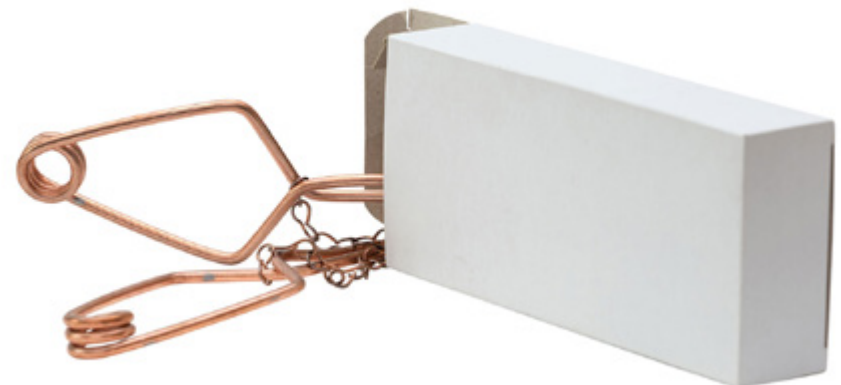
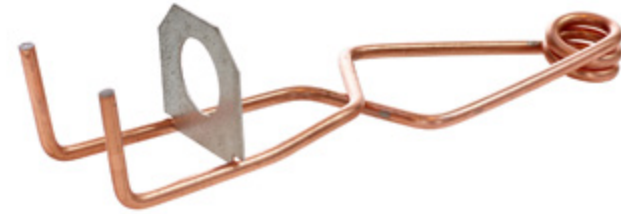
Product specifications

Materials: Copper-plated steel wire

Dimensions: 150 x 55 x 80 mm

Weight: 85 g


MADE IN
GERMANY



LUNA Bavarian Wire Trap Nr. 230 007

Bavarian-style wire trap for capturing voles – the first trap in DEUFA's history

- Wire trap with wire adjusting ring for quickly and effectively catching voles
- Steel wire with large cross-section for high and lasting impact with multiple use
- Copper coating provides corrosion protection for long-term outdoor use
- Wire adjusting ring made of galvanised steel wire with coil for securing the bait



Packaging variants

	Packaging unit	Product no.:	GTIN / EAN
	1	230 007	4004718 230 007
Loose	50	230 038	4004718 230 038
	100	230 052	4004718 230 052
2 units in pouch on card-board hanger	1	230 106	4004718 230 106
	50	230 151	4004718 230 151

Product specifications

Materials: Copper-plated steel wire

Dimensions: 150 x 55 x 80 mm

Weight: 85 g



LUNA Pincer Trap for Voles Nr. 235 002

Metal pincer trap for capturing multiple voles

- Claw trap with bait plate for catching voles – extremely easy to use!
- Claw and bait plate made of galvanised steel sheet with corrosion protection for outdoor use
- Spring made of galvanised spring steel wire with high and sustained impact even after multiple use
- Bait plate made of galvanised steel sheet with bait hook for easy securing of bait

Packaging variants

	Packaging unit	Product no.:	GTIN / EAN
Loose with bait plate	1	235 002	4004718 235 002
	25	235 033	4004718 235 033
	50	235 057	4004718 235 057
1 unit on cardboard hanger with bait plate	1	235 101	4004718 235 101
	50	235 156	4004718 235 156
Bait plate (replacement part)	50	235 095	4004718 235 095

Product specifications

Materials: Galvanised steel sheet, galvanised spring steel wire

Dimensions: 185 x 80 x 90 mm

Weight: 140 g



LUNA Tube Trap for Voles Nr. 405 009

Plastic tube trap for the humane live capture of voles

- Tube trap with entrances on both sides for the humane live capture of voles without risk of injury
- Tube is made of 100% recycled plastic with viewing slot to check the catch
- Flap door made of galvanised steel sheet with corrosion protection for long-term outdoor use
- Trap has no tension or resetting mechanism, helping to avoid injuring the animal in live capture
- No danger of injury for children, pets or other garden creatures

Packaging variants

	Packaging unit	Product no.:	GTIN / EAN
Loose	1	405 009	4004718 405 009
	50	405 054	4004718 405 054
1 unit with hanger	1	405 108	4004718 405 108
	50	405 153	4004718 405 153

Product specifications

Materials: Plastic, galvanised steel wire,
galvanised steel sheet

Dimensions: 150 x 55 x 80 mm

Weight: 85 g


**MADE IN
GERMANY**



LUNA Box Trap for Voles

one-sided Nr. 400 004 / **two-sided** Nr. 402 008

Two-sided wood box trap for capturing voles

- Box trap for voles with entrance on one side or two sides
- Closed design for preventing light and wind from getting into the underground vole tunnels
- Trap body made of PEFC™-certified beechwood
- Hammer, catch and bait hook made of galvanised steel wire with corrosion protection
- Spring made of galvanised spring steel wire for high and sustained impact even after multiple use outdoors



Packaging variants

one-sided	Packaging unit	Product no.:	GTIN / EAN
	1	400 004	4004718 400 004
Loose with barcode label	10	400 035	4004718 400 035
	20	400 059	4004718 400 059

two-sided	Packaging unit	Product no.:	GTIN / EAN
	1	402 008	4004718 402 008
Loose with barcode label	10	402 039	4004718 402 039

Product specifications

Materials: Beechwood, galvanised steel wire, galvanised spring steel wire

one-sided: 125 x 40 x 145 mm, 270 g

two-sided: 220 x 40 x 145 mm, 400 g



LUNA Tunnel Trap for Voles Nr. 404 002

Metal tunnel trap for the efficient capture of voles

- Vole tunnel trap with entrances on both sides
- Closed design for preventing light and wind from getting into the underground vole tunnels
- Trap body made of galvanised steel sheet with corrosion protection for long-term outdoor use
- Hammer, catch and bait hook made of galvanised steel wire
- Spring made of galvanised spring steel wire for high and sustained impact even after multiple use

Packaging variants

	Packaging unit	Product no.:	GTIN / EAN
Loose with barcode label	1	404 002	4004718 404 002
	10	404 033	4004718 404 033

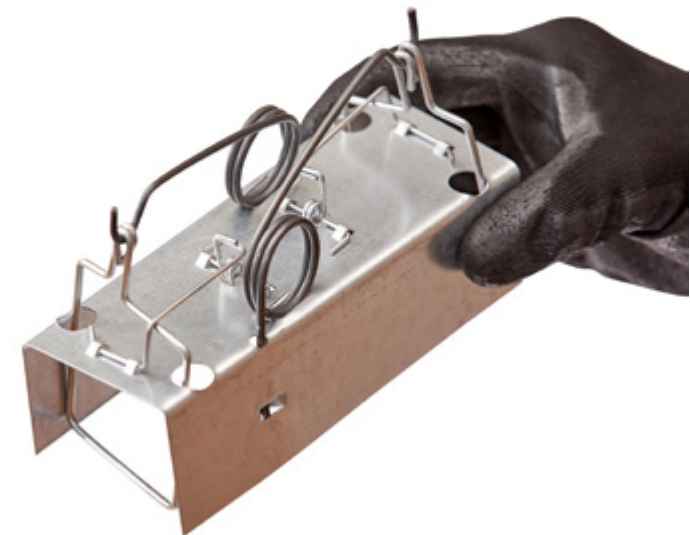
Product specifications

Materials: Galvanised steel sheet, galvanised steel wire, galvanised spring steel wire

Dimensions: 160 x 65 x 140 mm

Weight: 220 g


MADE IN GERMANY



LUNA Wolff Vole Trap Nr. 236 009

Wolff-style wire trap

- Wire trap with entrance on one side for capturing voles
- Long trap limbs: The trap extends far into the vole tunnels
- Base frame and trigger mechanism made of galvanised steel wire with corrosion protection for long-term outdoor use
- Spring made of galvanised spring steel wire for high and sustained impact even after multiple use

Packaging variants

	Packaging unit	Product no.:	GTIN / EAN
Loose	1	236 009	4004718 236 009
	50	236 054	4004718 236 054

Product specifications

Materials: Galvanised steel wire,
galvanised spring steel wire

Dimensions: 120 x 80 x 60 mm

Weight: 90 g


**MADE IN
GERMANY**



LUNA Attenkofer Vole Trap Nr. 234 005

Attenkofer-style wire trap

- Wire trap with entrances on both sides for capturing voles
- Base frame and trigger mechanism made of galvanised steel wire with corrosion protection for long-term outdoor use
- Spring made of galvanised spring steel wire for high and sustained impact even after multiple use

Packaging variants

	Packaging unit	Product no.:	GTIN / EAN
Loose	1	234 005	4004718 234 005
	50	234 050	4004718 234 050

Product specifications

Materials: Galvanised steel wire,
galvanised spring steel wire

Dimensions: 100 x 110 x 110 mm

Weight: 100 g


**MADE IN
GERMANY**



LUNA Tilt Clamp Vole Trap Nr. 238 003

Wire trap with tilt clamp mechanism for user-friendly capture of voles

- Wire trap with entrance on one side for capturing voles
- Base frame and trigger mechanism made of galvanised steel wire with corrosion protection for long-term outdoor use
- Tilt clamp made of galvanised steel sheet with bait hole
- Spring made of galvanised spring steel wire for high and sustained impact even after multiple use

Packaging variants

	Packaging unit	Product no.:	GTIN / EAN
Loose	1	238 003	4004718 238 003
	50	238 058	4004718 238 058

Product specifications

Materials: Galvanised steel sheet, galvanised steel wire, galvanised spring steel wire

Dimensions: 120 x 80 x 60 mm

Weight: 80 g


MADE IN
GERMANY



LUNA Special Vole Trap Nr. 500 001

Sturdy wire trap for capturing voles

- Wire trap with entrances on both sides for capturing voles
- Base frame, hammer and trigger mechanism made of galvanised steel wire for corrosion protection in long-term outdoor use
- Design with two tension springs made of galvanised spring steel wire for high and sustained impact even after multiple use
- Adjusting ring with bait pin made of galvanised steel wire

Packaging variants

	Packaging unit	Product no.:	GTIN / EAN
Loose	1	500 001	4004718 500 001
	50	500 056	4004718 500 056

Product specifications

Materials: Galvanised steel sheet, galvanised steel wire, galvanised spring steel wire

Dimensions: 190 x 80 x 90 mm

Weight: 110 g



LUNA Wood Box Trap for Martens Nr. 552 000

High-quality wood box trap for humane live capture of martens, polecats and cats

- Live-capture trap with doors on both sides (walkthrough trap) for the humane and species-appropriate capture of martens, cats and polecats
- Closed design for compliance with darkening regulations
- “Step” trigger mechanism and trap doors pose no risk of injury for animals (even in failed/partial capture)
- Hinged trap lid for inserting the bait and for cleaning before reusing the trap
- Inspection port with cover and safety grille
- Trap body, doors and cover made of spruce plywood (triple-layered material) for excellent stability of the trap, of PEFC™-certified manufacture
- Panel material with waterproof gluing for satisfactory moisture resistance even when used outdoors
- Seesaw catch, door holding catch and door securing catch made of galvanised and copper-plated iron wire for corrosion protection when used outdoors



Packaging variants

	Packaging unit	Product no.:	GTIN / EAN
Loose	1	552 000	4004718 552 000

Product specifications

Materials: Spruce triple-layered panel, galvanised and copper-plated steel wire, galvanised wire mesh

Dimensions: 1100 x 140 x 200 mm

Weight: 10 kg



LUNA Rabbit Trap Nr. 555 001

Wood box trap for the humane live capture of rabbits

- Live-capture trap for rabbits with door on one side
- Back wall and cover of the trap made of stable, galvanised wire mesh for species-appropriate capture
- “Step” trigger mechanism and trap doors pose no risk of injury for animals (even in failed/partial capture)
- Trap body, doors and cover made of spruce plywood (triple-layered material) for excellent stability of the trap, of PEFC™-certified manufacture
- Panel material with waterproof gluing for satisfactory moisture resistance even when used outdoors
- Seesaw catch, door holding catch and door securing catch made of galvanised and copper-plated iron wire for corrosion protection in long-term outdoor use



Packaging variants

	Packaging unit	Product no.:	GTIN / EAN
Loose	1	555 001	4004718 555 001

Product specifications

Materials: Spruce triple-layered panel, galvanised and copper-plated steel wire, galvanised wire mesh

Dimensions: 800 x 140 x 200 mm

Weight: 8 kg



LUNA Wire Box Trap Nr. 556 008

Wire box trap for the humane live capture of martens, polecats and larger predators

- Live-capture trap with doors on both sides (walkthrough trap) for the humane and species-appropriate capture of martens, cats and polecats, as well as larger rodents and predators
- Lattice construction for use near ponds, also for the live capture of otters
- Wire box, doors and trigger mechanism made of painted iron grille and steel sheet with corrosion protection for long-term outdoor use
- "Step" trigger mechanism and trap doors pose no risk of injury for animals (even in failed/partial capture)
- Please note: You must comply with the legal provisions on darkening live traps when catching martens



Packaging variants

	Packaging unit	Product no.:	GTIN / EAN
Loose	1	556 008	4004718 556 008

Product specifications

Materials: Painted wire mesh,
painted steel sheet

Dimensions: 1000 x 300 x 340 mm

Weight: 7,5 kg


**MADE IN
GERMANY**

LUNA Organic Snail Trap Nr. 607 106

Humane snail trap with no chemical poisons

- Beer trap for capturing snails without the use of chemical substances
- Special trap design: Snails simply won't be able to escape after being captured!
- Removable trap cover for filling the trap with the bait and for emptying
- Body (20 cm diameter, 8 cm height) made of plastic with a high percentage of recycled material
- Green body: Fits in inconspicuously in your garden!
- No danger of injury for pets, other garden creatures, children, etc.



Packaging variants

	Packaging unit	Product no.:	GTIN / EAN
Loose	1	607 106	4004718 607 106
	36	607 151	4004718 607 151

Product specifications

Materials: Plastic

Dimensions: 200 x 200 x 80 mm

Weight: 140 g



LUNA Berry Picker Nr. 248 002

- Berry picker for fast and effective harvesting of all kinds of berries and herbs
- Catch basket and handle made of PEFC™-certified beechwood
- Comb and basket base made of galvanised steel wire with corrosion protection
- Basket dimensions: 12.5 x 5 x 20 cm

Packaging variants

	Packaging unit	Product no.:	GTIN / EAN
Loose	1	248 002	4004718 248 002
with plate	60	248 064	4004718 248 064



Product specifications

Materials: Beechwood,
galvanised steel wire

Dimensions: 235 x 135 x 80 mm

Weight: 240 g



Fruit Picker LUNA Nr. 249 009

For carefully harvesting deciduous fruit

- Fruit picker for fitting onto 25 mm broomsticks
- Strong picking crown made of galvanised steel wire with a diameter of 15 cm
- Removable cotton bag for fast and easy cleaning

Packaging variants

	Packaging unit	Product no.:	GTIN / EAN
Loose	1	249 009	4004718 249 009
	20	249 054	4004718 249 054

Product specifications

Materials: Galvanised steel wire, fabric

Dimensions: 240 x 130 x 140 mm

Weight: 190 g


MADE IN
GERMANY



LUNA Lawn Edging Nr. 620 006

Discreet and robust boundary for flowerbeds

- Flower- and herb-bed perimeter for giving structure to gardens
- Extendable on all sides as required: The connection technology allows you to add extra 1-meter panels as needed
- Perforated edges on the ends for connecting the panels in variable angle settings of up to 90°
- Robust design: The width of 165 mm allows deep and stable positioning of the lawn edge
- Individual panels made of galvanised steel sheet with corrosion protection for long-term outdoor use

Packaging variants

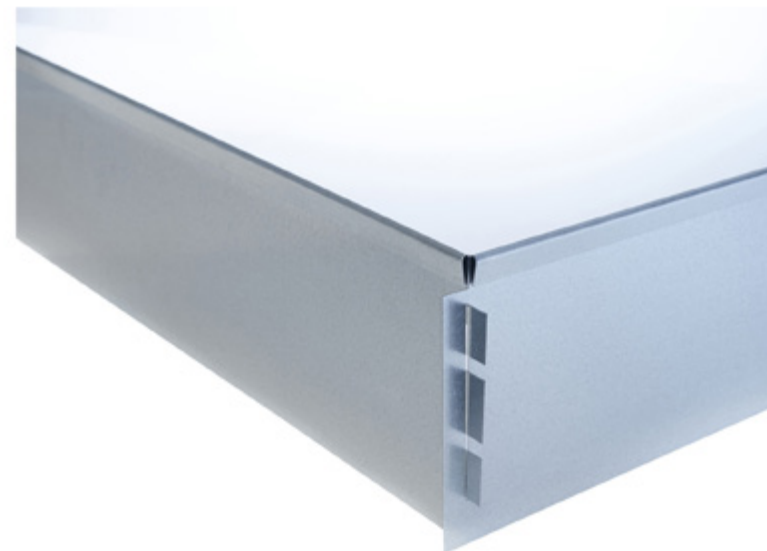
	Packaging unit	Product no.:	GTIN / EAN
Loose, 1 m	1	620 006	4004718 620 006
	20	620 020	4004718 620 020

Product specifications

Materials: Galvanised steel sheet

Dimensions: 1000 x 165 x 0,6 mm

Weight: 800 g



LUNA Snail Repeller Fence Nr. 610 007

- The gentle solution for your snail plague
- Effective and environmentally friendly snail repeller for protecting plants and herbs
- Special metal curved edge at the top: Snails simply can't get over!
- Minimal risk of injury for other garden creatures and children
- No environmentally harmful substances used
- Extendable on all sides: The design allows you to extend the fence by combining straight panels and corner connectors to suit the size of your garden
- Straight panels and corner connectors made of galvanised steel sheet with corrosion protection for long-term outdoor use
- To get you started, the basic set consists of twelve 1-meter straight panels and four corner connectors.

You can then add to the basic set to suit your needs!



Packaging variants

	Packaging unit	Product no.:	GTIN / EAN
Basic set (12 straight panels, 4 corner connectors)	1	610 007	4004718 610 007
Straight panel (extension)	1	611 004	4004718 611 004
	30	611 059	4004718 611 059
Corner connector (extension)	1	612 001	4004718 612 001
	50	612 056	4004718 612 056

Product specifications

Materials: Galvanised steel sheet

Dimensions: 1000 x 250 x 40 mm (611 004), 250 x 110 x 110 mm (612 001)

Weight: Weight: 15 kg (610 007), 1 kg (611 004), 200 g (612 001)





DEUFA

Fallenherstellung seit 1892

**DeuFa Fallen Produktions-
und Vertriebs GmbH**

Alte Landstraße 1–5
D-94127 Neuburg

Managing Director
Dr.-Ing. Vincent Keim

Contact
Tel.: +49 85 07 5 15
info@deufa.de

www.deufa.de/en

